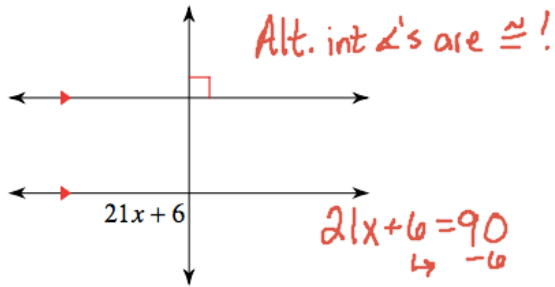


Solve for x.

19)



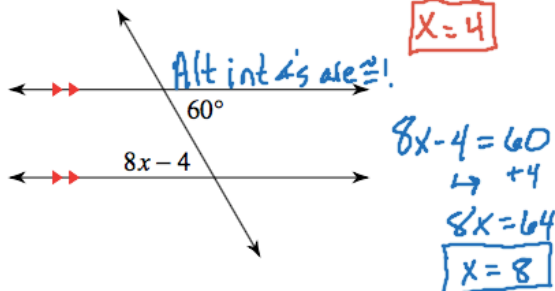
$$21x + 6 = 90$$

$$\rightarrow -6$$

$$21x = 84$$

$$\boxed{x = 4}$$

21)



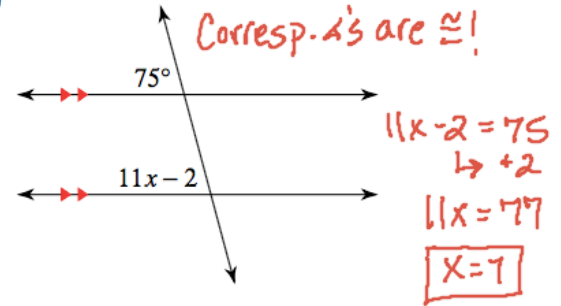
$$8x - 4 = 60$$

$$\rightarrow +4$$

$$8x = 64$$

$$\boxed{x = 8}$$

20)



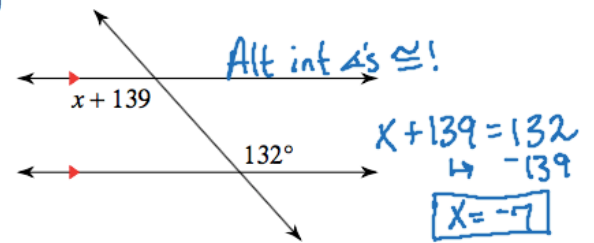
$$11x - 2 = 75$$

$$\rightarrow +2$$

$$11x = 77$$

$$\boxed{x = 7}$$

22)

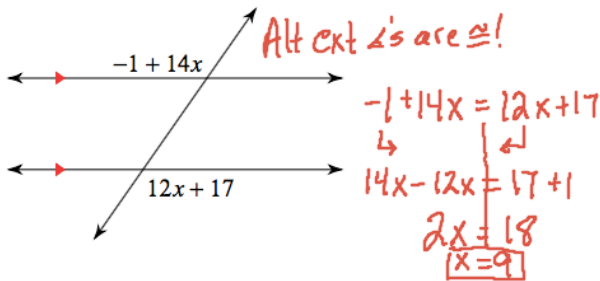


$$x + 139 = 132$$

$$\rightarrow -139$$

$$\boxed{x = -7}$$

23)



$$-1 + 14x = 12x + 17$$

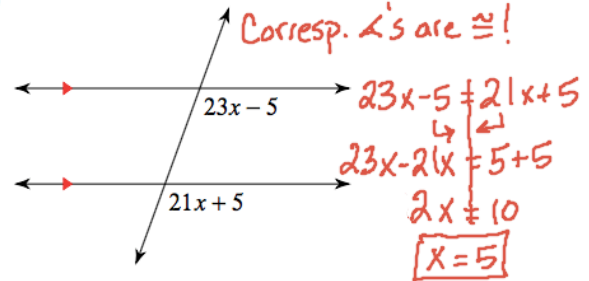
$$\rightarrow$$

$$14x - 12x = 17 + 1$$

$$2x = 18$$

$$\boxed{x = 9}$$

24)



$$23x - 5 = 21x + 5$$

$$\rightarrow$$

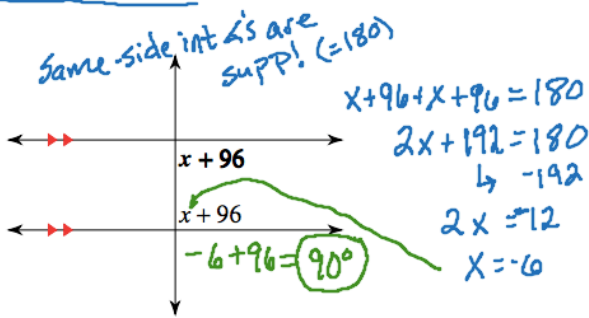
$$23x - 21x = 5 + 5$$

$$2x = 10$$

$$\boxed{x = 5}$$

Find the measure of the angle indicated in bold.

25)



$$x + 96 + x + 96 = 180$$

$$2x + 192 = 180$$

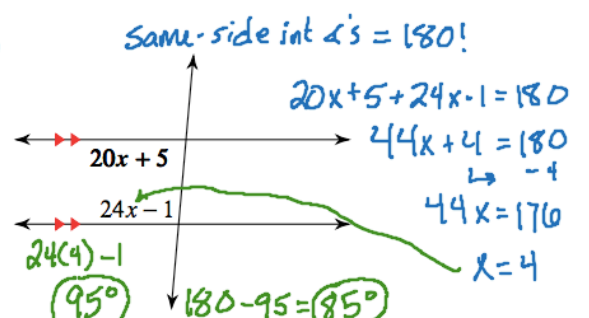
$$\rightarrow -192$$

$$2x = -12$$

$$x = -6$$

$$-6 + 96 = \mathbf{90^\circ}$$

26)



$$20x + 5 + 24x - 1 = 180$$

$$44x + 4 = 180$$

$$\rightarrow -4$$

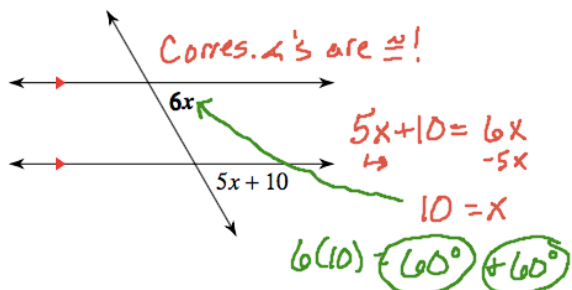
$$44x = 176$$

$$x = 4$$

$$24(4) - 1 = \mathbf{95^\circ}$$

$$180 - 95 = \mathbf{85^\circ}$$

27)



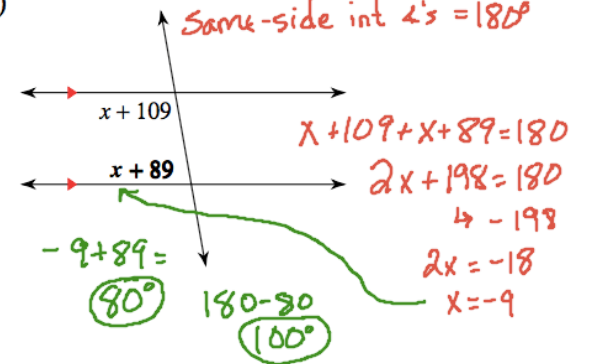
$$5x + 10 = 6x$$

$$\rightarrow -5x$$

$$10 = x$$

$$6(10) = \mathbf{60^\circ} + \mathbf{60^\circ}$$

28)



$$x + 109 + x + 89 = 180$$

$$2x + 198 = 180$$

$$\rightarrow -198$$

$$2x = -18$$

$$x = -9$$

$$-9 + 89 = \mathbf{80^\circ}$$

$$180 - 90 = \mathbf{90^\circ}$$